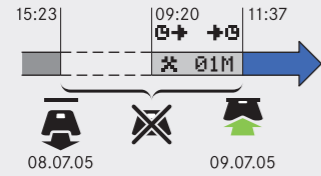


3a

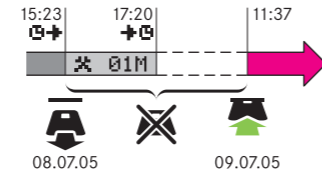
You have started present working day with no driver card inserted. **Manual entries must be done.**



Insert driver card [11:37 UTC]
Perform manual entries?
IP?MCont. day?
IP?Last work?
Select country Sweden
01M
15:23 08.07.2005
10:20 09.07.2005
11:37 09.07.2005
Select country Sweden
Modify Entries
Saving activities
Drive [11:38 UTC]

3b

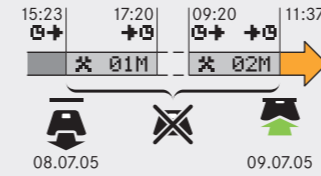
You have finished last working day with no driver card inserted. **Manual entries must be done.**



Insert driver card [11:37 UTC]
Perform manual entries?
IP?MCont. day?
IP?Last work?
01M
15:23 08.07.2005
16:23 01M
17:20 08.07.2005
18:20 01M
IP?Last work?
Select country Sweden
IP?Begin time?
11:37 09.07.2005
Select country Sweden
Modify Entries
Saving activities
Drive [11:38 UTC]

3c

You have finished last working day AND started present working day with no driver card inserted. **Manual entries must be done.**



Insert driver card [11:37 UTC]
Perform manual entries?
IP?MCont. day?
IP?Last work?
01M
15:23 08.07.2005
16:23 01M
17:20 08.07.2005
18:20 01M
IP?Last work?
Select country Sweden
IP?Begin time?
09:20 09.07.2005
Select country Sweden
02M
09:20 09.07.2005
10:20 02M
11:37 09.07.2005
12:37 02M
Modify Entries
Saving activities
Drive [11:38 UTC]

### Modify manual entries

Modify your recently made manual entries:

- Change
Delete
Add (new entry is inserted BEFORE the selected activity)

Note! Manual entries performed at previous driver card insertion can not be modified.

#### Change recently made entries

Modify Entries
1\* 09:20 09.07.2005
02M
Modify Entries
Saving activities

#### Delete recently made entries

Modify Entries
1\* 09:20 09.07.2005
02M Add or delete entry
1\* 09:20 09.07.2005
Modify Entries
Saving activities

#### Add more entries

Modify Entries
1\* 09:20 09.07.2005
02M Add or delete entry
1\* 09:20 09.07.2005
15 09.07.2005
Modify Entries
Saving activities

## Digital Tachograph SE5000 QuickGuide



STONERIDGE - SETTING THE STANDARD

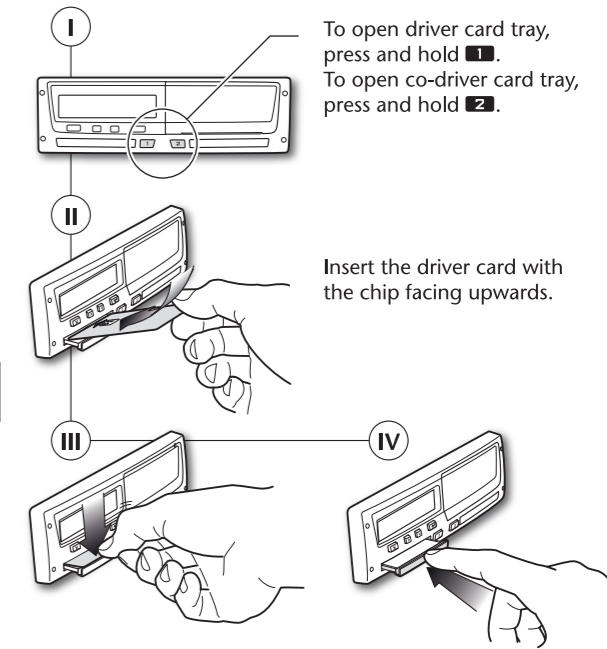
### Activity recording

All activities performed during a working day must be recorded on your driver card.

### Manual entries

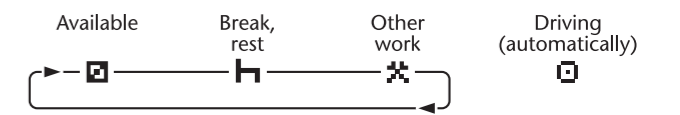
Manual entries of activities must be done if you have performed activities since last card withdrawal without your driver card inserted.

### Insert driver card



### Select activity

To select activity, short press 1 for driver, or 2 for co-driver.



For more information about Digital Tachographs, Training courses and Data Management Solutions, please contact Stoneridge on +44 (0)870 887 9256.

SE5000 Rev. 6 101659/01R01.1 EN

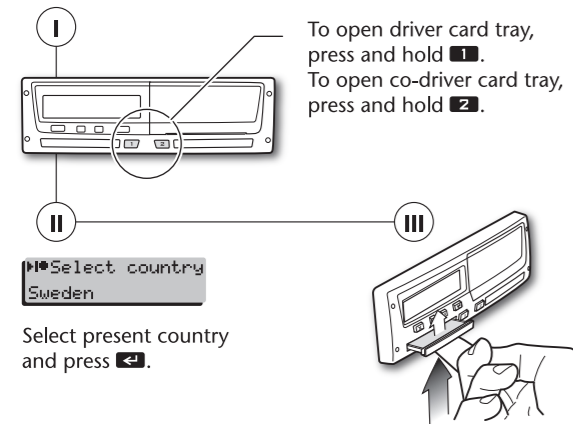
## UTC time (Universal Time Co-ordinated)

The data stored and the time displayed in the tachograph is always in UTC time.

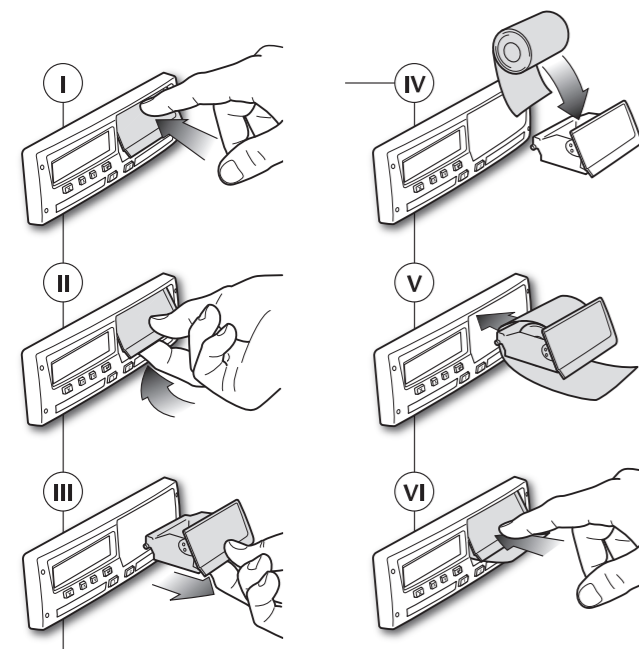
Local time is only shown as information:

- On driver standard display.
- At manual entries of activities.
- In a few printouts.

## Withdraw driver card



## Replace printer paper



## Manual entries

Manual entries of activities must be done if you have performed activities since last card withdrawal without your driver card inserted.

You can only perform manual entries:

- Afterwards, at your next driver card insertion.
- Of a maximum of 16 activities each driver card insertion.
- For periods when your driver card has not been inserted, limited to cover 24 hours after last withdrawal and 24 hours before present insertion of your driver card.

### Note!

The tachograph automatically proceeds to "Drive" **1 minute** after your last interaction with it. Then, manual entries are no longer possible.

### Five user scenarios

- 1** New working day.  
**You choose to not perform manual entries.**
- 2** Continuing present working day, but your driver card has not been inserted for a period.  
**Manual entries must be done.**
- 3a** Started present working day with no driver card inserted.  
**Manual entries must be done.**
- 3b** Finished last working day with no driver card inserted.  
**Manual entries must be done.**
- 3c** Finished last working day AND started present working day with no driver card inserted.  
**Manual entries must be done.**

### Exit manual entries

- Begin driving.
- Press and hold **X**.
- Insert or withdraw a driver card.
- Do not interact with the tachograph for 1 minute.
- Accept with **↵** the default activity and times (last card withdrawal and insertion times).

### Record activities in writing

You must record your activities in writing if:

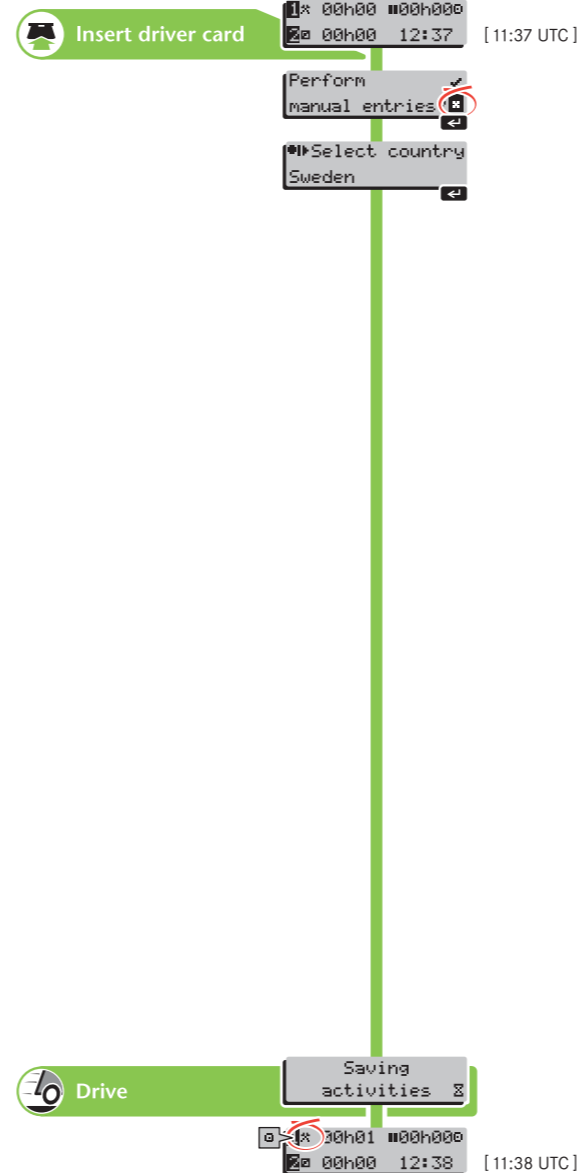
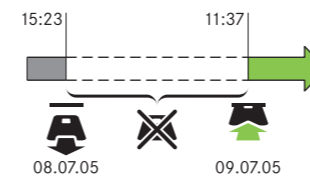
- The record was not completed in "Manual entries".
- Activities were performed outside the 24-hour limits (see above).

### User scenarios

- Insert driver card
- Withdraw driver card
- No driver card inserted

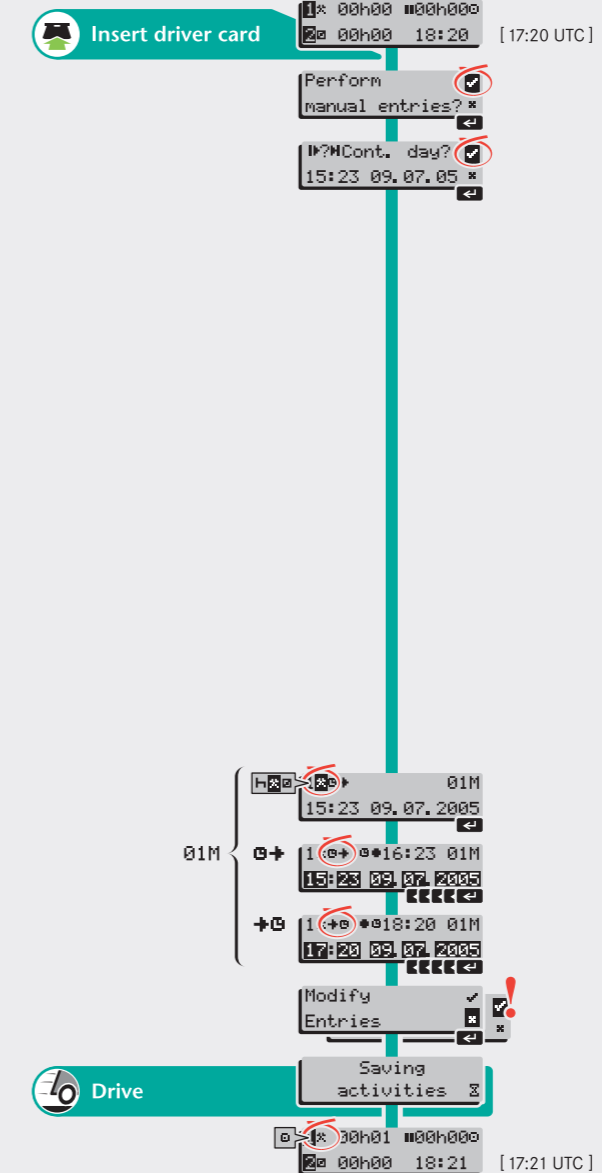
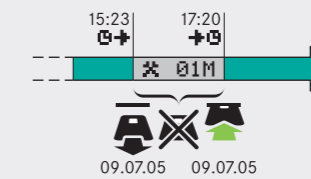
**1**

New working day.  
**You choose to not perform manual entries.**



**2**

You are continuing the present working day, but your driver card has not been inserted for a period.  
**Manual entries must be done.**



## Legend

### Display

- Other work
- Break, rest
- Available
- Driving is automatically selected when vehicle moves (can not be selected manually)
- Start time for an activity (UTC time)
- Start time for an activity (local time)
- End time for an activity (UTC time)
- End time for an activity (local time)
- Manually entered activity, initially
- Manually entered activity, when modifying
- Yes
- No

### Buttons

- 1** Short press: Select driver activity (card inserted)
- 1** Press & hold: Open driver card tray
- 2** Short press: Select co-driver activity (card inserted)
- 2** Press & hold: Open co-driver card tray
- ↵** Short press: Confirm. Proceed in entry 01M, 02M,...
- ↵** Press & hold: Add / Delete entry 01M, 02M,...
- ←←←←←** Sequence of "short press" in a display
- X** Short press: Back in display for entry 01M, 02M,... Confirm modified entry 01M, 02M,...
- X** Press & hold: Quit and proceed to "Drive"
- ↑** Select menu, country, yes/no.
- ↓** In 01M, 02M, ... select activity, increase/decrease parameters