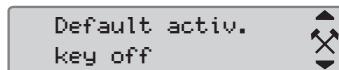
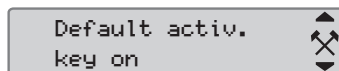
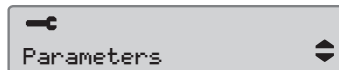
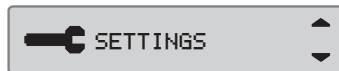


Default Activity key on/off

This setting gives the opportunity to preset an automatic activity change for both driver and co-driver when switching the ignition key on or off (consult relevant authority for national regulations).

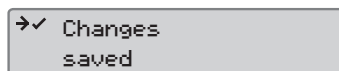
1. Press the confirm button.
Select and confirm *Settings*.
2. Select and confirm *Parameters*.
3. Select and confirm *Default activ.key on* or *Default activ.key off*.



4. Select and confirm the preferred activity; *No change, Rest, Available* or *Work*.



5. The following is displayed.

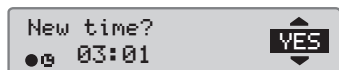


6. Press the cancel button three times to return to the standard display.

Daylight Saving Time

An automatic local time adjustment for summer and winter is automatically prompted on the last Sunday in March and last Sunday in October, respectively.

1. Select *YES* to acknowledge or *NO* to cancel the time change.



Company Quickguide

SE5000 Digital Tachograph



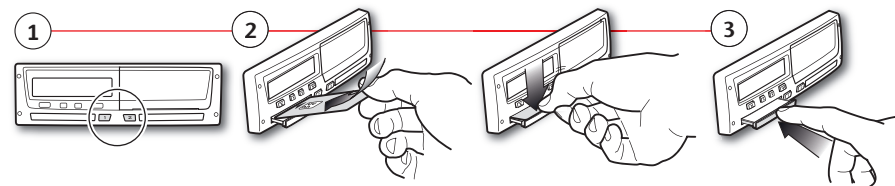
Driver card tray Driver button Co-driver button Co-driver card tray Paper cassette

- Cancel, move back to previous display
- Select, highlight, change values
- Confirm, move forward in displays

Note! Card handling and browse in menu is only possible when vehicle is not moving.

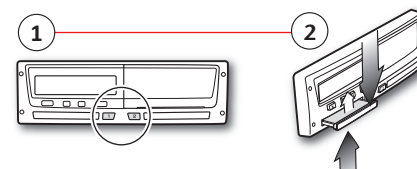
Insert the card *(always possible in standard menu and ignition ON)*

1. Press and hold the driver or co-driver button until tray opens.
2. Insert the card with the chip facing upward.
3. Close the tray by pushing it gently forward.



Withdraw the card *(not possible in all menus)*

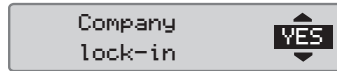
1. Press and hold the driver or co-driver button until tray opens.
2. Press the card up slightly from underneath through the opening in the tray or push the edge of the tray down until the card pops out.



Company lock-in

In order to prevent unauthorized persons from accessing the tachograph data, a lock-in should be performed before start using the tachograph.

1. Insert a company card in either of the tachograph trays. The tachograph asks if a Company Lock shall be activated if there is none for this company.
2. Press the confirm button to enter the tachograph menu.
Select and confirm *COMP LOCKS*.
3. Confirm with *YES* to perform the lock-in.



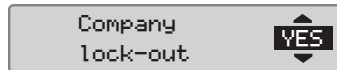
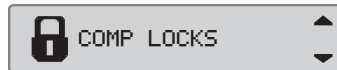
4. After confirmation the following message will be displayed.



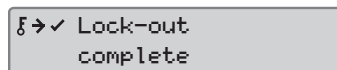
Company lock-out

A lock-out (unlock) must be performed before transferring the tachograph to another company/owner. Otherwise, there is a risk getting the next users data recorded on current company. If the lock-out is forgotten the data will not be locked-out until the next company performs a lock-in. To secure your data, you should download your data before performing a lock-out.

1. Insert a company card in either of the tachograph trays. The tachograph automatically enters the company mode of operation.
2. Press the confirm button to enter the tachograph menu.
Select and confirm *COMP LOCKS*.
3. Confirm with *YES* to perform the lock-out.

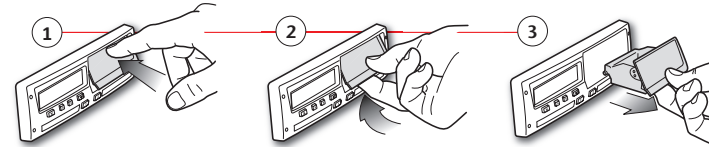


4. After confirmation the following message will be displayed.

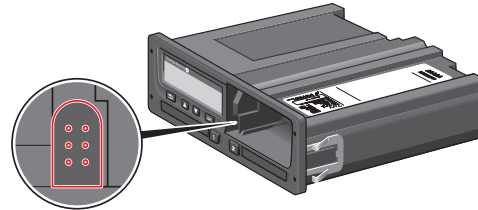


Vehicle Unit Download

1. Remove the printer cassette.



2. Attach the download equipment to the tachograph through the 6-pin download connector.



3. Download the data according to the instruction on the downloading equipment. Ensure that the ignition is ON when starting the download.
4. The following message will be displayed indicating that the tachograph downloading is active.
5. When the downloading is completed, the following message will be displayed.
6. If the downloading process fails, the following message will be displayed. Check the connections and downloading equipment. For further information, see the Driver & Company Manual (Company Mode).

